

THE SPECTRUM

THE NEWSLETTER OF ST. PAUL-REFORMATION LUTHERAN CHURCH

AUGUST
2025

Summer Liturgy
9:30 a.m.

Nursery
Kids with Parents
9:15 a.m.

Livestream video via
SPR's Facebook page
or look in your e-mail
on Sunday mornings.

Visit us on the web!
www.stpaulref.org

St. Paul-Reformation
is a congregation of
the Evangelical
Lutheran Church in
America (ELCA).

100 Oxford Street N.
St. Paul, MN 55104
651-224-3371
office@stpaulref.org

The Spectrum items, articles and columns need to be to the Parish Office by the 12th of the month. *The Spectrum* goes to print on the 15th and this date is hard and fast. Articles received after the 12th may or may not be included.



A WELCOME FOR ALL *SPR at Twin Cities Pride...For Over Thirty Years!*

St. Paul-Reformation once again hosted a booth at Twin Cities Pride in Loring Park, welcoming festival goers and providing a welcoming Christian presence. SPR has been “in the park” for over thirty years, one of the longest organizations to participate. A bevy of SPR members helped staff the booth, and each year the number of “familiar Lutheran faces” who stop by to say hello increases. Thank you to all who helped!



Above: SPR member (and pastor) Sue Tjernehoj joins Pr. Patrick at SPR's booth (along with Martin Luther) to welcome festival goers.

BY THE TIME THAT YOU RECEIVE this newsletter, the ELCA Churchwide Assembly will have met in Phoenix to—*among other things*—elect a new Presiding Bishop, hear recommendations about our common life together, and craft ecclesiological legislation for the life of our denomination, the Evangelical Lutheran Church in America (ELCA). The ELCA remains the largest Lutheran denomination in the United States, a merger of three predecessor bodies: the American Lutheran Church (ALC), the Lutheran Church in America (LCA), and the tiny—but very important—Association of Evangelical Lutheran Churches (AELC), the group that resulted from the schism in the Lutheran Church-Missouri Synod in the early 1970's.

In some ways, even twenty-five years after the creation of the ELCA, the fingerprints of these predecessor bodies continues to influence our life together. Each of them had their own piety, understanding of authority, and interpretation of the Lutheran tradition, often reflecting the immigrant communities out of which they were born. Each of them set aside their differences for a greater Lutheran witness in the United States.

In the years since the creation of the ELCA, the religious landscape in the United States has shifted significantly. Increased diversity, the rise of American Evangelical Christian Nationalism, and a general decline in religious participation has required of the “mainline” churches a re-think on how we do things. Parts of the ELCA have served as laboratories for various efforts of renewal, some yielding interesting results, and others colossal failures.



“We are the church with other people, including other people who think differently, have different backgrounds, and come from different places.”

And there can be—in both denominations and congregations—a search for a reproduceable “silver bullet” that will create growth, reach out to new and diverse people, and (of course) completely stabilize the church’s finances. Indeed, while some strategies work in some places, they are often not reproduceable or able to be executed in others. Context is everything.

The part of our life together that we *are* called to reproduce and to live into is *faithfulness*, which works in all times and in all places. Look for the “silver bullet” to solve all your problems if you want, but the church has had to re-learn over and over again that the only sure-fire strategy for growth is a solid, stable, and persistent faith, able to speak up when the moment demands it and to enter into quiet contemplation when it, too, is called for.

One of the things that we know as religious communities in this age is that people (for all our social media) are lonelier than ever, experience disconnection from other people, and (dangerously) retreat into their own echo chambers where preconceived ideas are simply confirmed without challenge or guardrail. This is a danger for those very conservative...and those very progressive.

Which is why a broader vision of the church is required, and why things like “denominations” matter. We are not the church alone. We are the church with other people, including other people who think differently, have different backgrounds, and come from different places. Living together under Jesus—even in the midst of differences—has always been the church’s task since the Day of Pentecost. Remember: not all

the disciples were the same, nor did they have the same gifts, or the same thoughts about things. Each was needed to witness to the risen Jesus in the way that God was calling them to do so.

Which brings us back to these three churches which came together to form one larger church: each was needed, and—now as one—the gifts they brought to the table and which continue to inspire the ELCA are needed, most especially in an age when the message of Jesus is being twisted in dangerous ways, ways that justify cruelty, “-isms” of all kinds, and an emphasis on material wealth that is far from the vision of the Gospels. There must be a counter-voice: and that voice is you, dear members of the ELCA. Your job is to proclaim the Gospel of mercy, of compassion, of human dignity in all its forms, and of a wide latitude for what it means to be part of God’s household.

As our new Presiding Bishop begins their work (and as of this writing, I do not know who that will be!), I hope you will take a step back, take a broader look at what it means to be a church of varied people, varied ideas, varied gifts, and give thanks. Even in the midst of so many challenges, the call to faithfulness never changes. In a world of many gods, the church continues to confess what it always has: “Jesus Christ is Lord.” This One, and no other.

+Pr. Patrick H. Shebeck, *pastor*

FROM THE CANTOR

2025 marks the 1700th anniversary of the Nicene Creed, one of our foundational statements of Christian belief that is used across many denominations. To celebrate this milestone, in August I will play a number of organ settings of Martin Luther’s hymn “Wir glauben all an einen Gott” (We All Believe in One True God). You can find it in Evangelical Lutheran Worship at #411, which I always thought was an appropriate



number because this hymn lays out all the information, the 411 if you will, that you need to know about the Holy Trinity. (If you’re too young to get this reference, go ask an SPR elder to explain!) The hymn was first published in Johann Walter’s *Ein geistliches Gesangbüchlein*, the earliest collection of Lutheran hymns, published in Wittenberg in 1524. Luther didn’t write this hymn from scratch, though. He used a tune that had been associated with a German plainchant version of the Creed since around 1400. Luther kept the first two lines of the old text, but he rewrote the rest and expanded it to three stanzas, one for each person of the Trinity. He included it in his 1526 *Deutsche Messe* as well.

Its inclusion in these two important early sources surely had an effect on the frequency of its use – it seems it was widely known by organ composers of the Renaissance and Baroque. The pieces I have chosen to play demonstrate all sorts of methods of dealing with a chorale tune. It’s a long tune: 12 lines of 8 syllables, except the penultimate line, which has only 7 syllables. None of the melodic lines repeat, so composers have to decide if they are going to treat the whole tune, or just excerpts. Johann Christoph Bach (1642-1703), cousin of J.S. Bach’s father Ambrosius, confines his piece to the opening phrase, treating it as a short fugue, probably meant to introduce the piece to a singing congregation.

Samuel Scheidt (1587-1654) gives “Wir glauben all” pride of place in his three-volume *Tabulatura Nova* (Hamburg, 1624). The collection uses Italian-style movable type, an innovation in keyboard printing in Germany at the time, hence the “nova” in the title. Scheidt

The Spectrum Published Monthly
St. Paul-Reformation Lutheran Church
100 Oxford St N St. Paul, MN 55104
Issue: Volume 44 #8

BIRTHDAYS

8/01 Ted Johnson
 8/02 Carla Hagen
 8/06 Savanna Maki
 8/06 Lyndee Salo
 8/07 Charles Olson
 8/07 Ed Stuart
 8/09 Bereket Olson
 8/09 Sam Rude
 8/10 Jude Puroway
 8/14 Doug George
 8/14 Sammie Kuester
 8/15 Laura Boe
 8/15 Jaxon Weber
 8/16 Kay Pekel
 8/16 Isaac Webster
 8/17 Shirley Henning
 8/18 Ruby Beckman
 8/18 Leo Treadway
 8/20 Lisa Waldner
 8/23 Claudia Hanson
 8/23 Julie Richards
 8/23 Vanessa Weber
 8/30 Beth Benson
 8/31 Sarah Korinko Petersen

ANNIVERSARIES

8/02 Katie McKee & Matthew Webster
 08/11 Mike & Patty Banks
 8/15 Holly Tischer & Oulia Yang
 8/16 Marjorie & Steven Ruth
 8/17 Sara Gjerdrum & Charles Olson

ASSOCIATE FOR CHILDREN AND FAMILIES

+ SPR is in the process of hiring a new “Associate for Children and Family Ministry” to support the many young ones (and families) we have coming up. Our hope is to have someone in place by mid-August. Stay tuned as we update this position! In related news, Sunday School will move to run concurrent with church starting September 14 (more details on this soon...).

RALLY SUNDAY POTLUCK + Be looking ahead now to Rally Sunday, September 7th. On that day, we return to our regular service time at 10:30 a.m. (choral eucharist); there will be no 8:00 a.m. service for the foreseeable future. On that day, you are invited to join us for a potluck brunch from 9-10 a.m., as well as a service project for Lutheran Social Service, and various ministry sign-ups for the year ahead (we need your help, please!). Please bring something to share...and join us as an exciting year kicks off!

**CHURCHWIDE ASSEMBLY: PHOENIX**

The Churchwide Assembly of the ELCA will meet at the end of July in Phoenix. Various matters are on the agenda, including:

- Election of a new Presiding Bishop;
- Election of a new Secretary;
- Recommendations from the “Commission on a Renewed Lutheran Church;”
- Matters related to gender justice, climate change, and international conflict;
- Repudiation of the “Doctrine of Discovery,” a memorial which originated (partly) at the Lutheran Church of the Redeemer (our neighbors to the east);
- Memorials and resolutions related to child protection policies for congregations and Synods;

You can learn more about the Assembly’s work at www.elca.org/about/leadership/churchwide-assembly

Cantor, continued...

includes four variations of the hymn tune in its entirety, moving the tune from the soprano to the tenor to the bass.

Heinrich Scheidemann (1596-1663) and Johann Pachelbel (1653-1706) both wrote settings in the genre called “ornamented chorale prelude.” The left hand and pedal play a slowed-down version of the hymn’s harmony, and the right hand plays a highly decorated version of



Above: First line of “Wir glauben all an einen Gott” as published in 1524. **Below:** as it appears in ELW.



the melody on a separate keyboard, full of trills and fast runs that sometimes obscure the original tune. With such a familiar tune, the listener can delight in the composer’s inventiveness and the fast fingers of the performer.

Johann Sebastian Bach (1685-1750) wrote quite a few settings of the chorale, again pointing to its importance and familiarity with listeners. Two settings were published in his *Clavierübung III*, a collection of organ settings of Luther’s catechism chorales. The first setting is essentially a three-part fugue over a repeating pedal motive that perhaps represents the solid basis of faith on which the church is built. The second setting is for hands only, and uses the dotted rhythms and flourishes typical of a French overture, a style portraying the majesty of God that you might know from the overture to Handel’s *Messiah*.

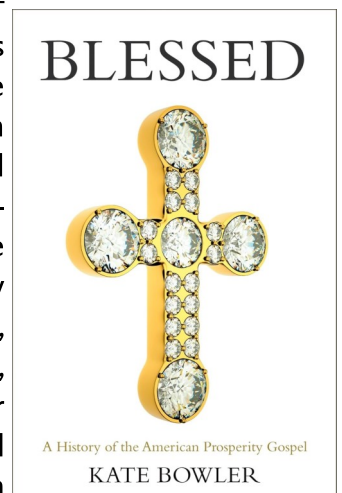
There are also several smaller settings by or attributed to Bach. One of these has since been attributed to his student, Johann Ludwig Krebs (1713-1780), and it is the piece causing

me the most head scratching! Several versions of it exist, sometimes with the chorale tune in the tenor, sometimes in the melody. Some versions have you play that tune in long slow notes with the pedal, while another version has a double pedal line with both feet playing eighth notes while the left hand sustains the slow melody. This strikes me as unlikely because who would do all that work when you can give the hard part to your left hand and keep the pedal part more manageable? And yet, it’s quite effective to hear the piece with two melody lines in the feet. We’ll see which version wins out when I play it for you later this month. I hope you will enjoy this exploration of this wonderful chorale tune!

+Sr. Stacie Lightner, *Cantor*

ADULT FORUM BEGINS IN SEPTEMBER:

“Blessed: A History of the American Prosperity Gospel.” + Starting Sunday, September 14th + How have millions of American Christians come to measure spiritual progress in terms of their financial status and physical well-being? How has the movement variously called Word of Faith, Health and Wealth, Name It and Claim It, or simply prosperity gospel come to dominate much of our contemporary religious landscape?



Starting in September, we will explore these and other questions related to the “Prosperity Gospel” in order to better understand the current religious landscape of the United States. Books will be available in the narthex starting August 15th for \$24.00, along with a reading schedule. We hope you can join us for what promises to be a fascinating conversation!

AUGUST MINISTRY SCHEDULE

Thank you to all the volunteers who help make the 9:30 a.m. Sunday morning services “run.”

Sunday, August 3, 9:30 AM

Amy Rouillard, Victoria Smith - Asst. Ministers
 Shirley Henning, David Gjerdrum - Lectors
 Cheri Gohr, Deanna Sande, Margaret Schuster,
 Joshua Weichel - Greeters and Ushers
 Eldora Pearson, Alice Swan - Coffee and Treats
 Elizabeth Adedigba - Acolyte
 Drew Puroway - Cantor

Sunday, August 10, 9:30 AM

Dorcas Adedigba, Ian Block - Asst. Ministers
 Kayla Ulsby, Ellis Bedford - Lectors
 Anne & Jim Halgerson, Hilary Hund,
 Roman Hund - Greeters and Ushers
 Steve Ruth, Marjie Ruth - Coffee and Treats
 Sebastian Badilla - Acolyte | Jamie Block - Cantor

Sunday, August 17, 9:30 AM

Ian & Jamie Block - Assisting Ministers
 Susan Martyn, Peter Huckfeldt - Lectors
 Cheri Gohr, Joe Herbert, Eldora Pearson,
 Jan Swenson - Greeters and Ushers
 Annette Hines, Anastasia Pold - Coffee/Treats
 Mya Wagner - Acolyte | Chris Lyman - Cantor

Sunday, August 24, 9:30 AM

Amy Rouillard, Kathy Thomforde - Assisting Ministers
 John Whalen, Jim McGowan - Lectors
 Kristen Damberg, Pat Graham, Sara Gjerdrum,
 Deanna Sande - Greeters and Ushers
 Anne & Jim Halgerson - Coffee and Treats
 Mikko Matala - Acolyte Carsten Slostad - Cantor

Sunday, August 31, 9:30 AM

Amy Rouillard, Victoria Smith - Asst. Ministers
 Karen Hanson, Alyn Bedford - Lectors
 Cheri Gohr, Roman & Hilary Hund, Jan Swenson
 - Greeters and Ushers
 Margaret Schuster, Joshua Weichel - Coffee/
 Treats
 Henry Hanson - Acolyte | Mike Banks - Cantor

CAPITAL CAMPAIGN UPDATE

+ SPR is in the preparatory stages of a major Capital Campaign, and our goal is to keep you updated on developments as they occur. Right now, the Finance Committee has been formed and has met, chaired



FEASIBILITY STUDY

by Sarah Matala; this month, we signed our contract with Mark Davy & Associates (the capital campaign consultant) who are beginning their work to execute a feasibility study this summer.

What is a “feasibility study?” The feasibility study’s purpose is to establish the realistic giving capacity of the congregation for the campaign. Through interviews, conversations, and questionnaires, the results of this study—based on the information gathered from the congregation—will be presented to the Parish Council: either “yes, go ahead!” or “No, not right now.”

Meanwhile, the Building Committee continues to gather bids from various contractors for work on the sanctuary, the sound system, Lower Auditorium, and exterior lighting (among other projects). The process of getting bids takes a long time, as (generally) we do not simply receive one bid without getting a competing bid. The goal of this part of the Building Committee’s work is to be able to prioritize projects and put dollar figures to potential improvements.

Please continue to pray for the work of the Capital Campaign, and—as you are looking ahead—please know that you might get a call from one of our consultants asking for your input. Your voice is important in this process, and your opinions and thoughts matter very much.

QUILTING AND KNITTING *for Charity*

Join us on **Saturday, August 2 at 10:00 a.m.** You can sew, arrange blocks, iron, tie layers together, cut fabric! All knitters, crocheters, and quilters invited. Work on your own projects. Join in on the fun! Bring a snack to share; coffee is provided. Contact Gwen Peyton at gwenpeyton5@gmail.com.

MEALS MINISTRY!

Once a month, SPR members help each other by preparing and delivering meals for members who may find it challenging to always have a home-cooked meal. Meals are cooked in the church kitchen at **9:00 a.m. on Saturday, August 16.** Volunteers needed; if you can chop, cook, package, measure or just like to socialize, please join us. The alley door will be open. Your contributions for this ministry are greatly appreciated. For more information please contact Gwen Peyton, gwenpeyton5@gmail.com.



Above: A good-sized crew gathered to celebrate Jennifer Walding's retirement. **Below:** Parish Vice President Susan Martyn and Pr. Shebeck gather with Jennifer for a photo; Jennifer was gifted with an icon (shown below) of Christ as well as a Delta gift-certificate for travel (to see her grandchildren!). Thanks for all who came out to celebrate!

**BREAKFAST CLUB +**

Join us **Sunday, August 3** at the Louisiana Café on Selby Ave. after the 10:30 service. All are welcome to join this time of fellowship, good conversation and good food...all are welcome to join us!

DONATE TO SPR USING YOUR SMARTPHONE!

A great way to donate whether you are at church or out and about! Now you can give from anywhere in the world! It's fast, easy, and secure. If you are giving electronically, you may use the QR code on the right, which is safe, fast, and efficient! You can donate to either the Good Samaritan Fund or the Parish General fund (in addition to your regular pledge). Give it a try! Thanks to all who are using this quick and easy way to donate!



The Spectrum Monthly Newsletter
St Paul-Reformation Lutheran Church
100 Oxford St N
St. Paul, MN 55104

NON PROFIT ORG
US POSTAGE
PAID
TWIN CITIES MN
PERMIT No. 517



ST. PAUL-REFORMATION LUTHERAN CHURCH
I N T H E C I T Y F O R G O O D

ADDRESS SERVICE REQUESTED

PARTING SHOT



SPR said goodbye to Parish Administrator Jennifer Walding after seventeen years of service. Here, the community gathered for a farewell reception to celebrate Jennifer's time with us.